



Statement of capabilities

AgroecoliveLab

Applied Agroecology Group,
University of Jaén (Spain)

- ➔ Woody crops and other Mediterranean agroecosystems
- ➔ Carbon footprint, climate change mitigation and adaptation
- ➔ Ecosystem services in woody crops
- ➔ Innovation in communication and knowledge transfer



THE TEAM



**Roberto
García Ruiz**
Coordinator and
principal investigator

Roberto is Full Professor in the Department of Animal, Plant and Environmental Biology at the University of Jaén and Head of the Ecology Unit at INUO. His research focuses on Agroecology, Soil and Environmental Sciences, and Ecology.

He is currently internationally recognised as one of the leading authorities on olive grove sustainability. He has actively participated in numerous international projects focused on the ecological transition of the agricultural sector, with particular emphasis on the olive oil sector.

Of particular note is his role as coordinator of the SUSTAINOLIVE project, recognised by the EU as a flagship initiative in communication, knowledge transfer, and agroecological training for olive farmers.



**José
Liétor Gallego**
Communication and knowledge
transfer lead

José is a postdoctoral research technician involved in several international research projects. He has a multidisciplinary profile, with his main areas of work being data processing, the design of educational materials, and innovation in communication and dissemination.



**Evangelina
Pareja Sánchez**
Postdoctoral researcher

Evangelina's research focuses on conservation agriculture, soil management, crop modelling, carbon and nitrogen cycles, carbon sequestration, greenhouse gas emissions, and the valorisation of olive mill by-products.



**Pablo
Domouso de Agar**
Postdoctoral researcher

Pablo holds a PhD in Earth and Environmental Science and Technology. His research career has focused on several aspects of olive grove sustainability, such as nutrient cycling and carbon storage. He is currently a re-searcher at IFAPA, where he works on a project on carbon credits.



**Beatriz
Ruiz Carrasco**
Predoctoral researcher

Beatriz is a research technician involved in several research projects and is also a PhD student. Her main areas of work include data processing for life cycle assessment and emissions calculations for carbon footprint measurement.



**M^a Victoria
Ochoa Esteban**
Lab technician

Victoria is currently pursuing her PhD studies and works as a research technician. Her main priorities are the characterisation of soil samples and plant material through the analysis of their physicochemical, biogeochemical, and microbiological properties.



**Jaime
Lechuga Puñal**
Field technician

Jaime is a technician involved in projects aimed at improving agri-food production systems and certifying carbon credits in olive groves. His versatility spans field equipment installation, sample collection and processing, as well as data analysis and management.



RESEARCH EXPERIENCE



AgroecoliveLab has a solid research track record, supported by a strong scientific output, which reflects its extensive experience in the design, coordination, and implementation of research projects, as well as in managing multidisciplinary teams and producing high-impact scientific publications.

> 25 Research projects
(as partner)

> 10 Research projects
(as coordinator)



**SUSTAIN
OLIVE**



**CLIMATE
CROPPING**



ABSORCABILIVO
olive technology

LIFE OLIVER



OLIVE tree for Verified Emission Reduction generation



SCALE-it Project



OliveOilMedNet

LIVINGSOIL

CARBONO **Olivar**

> 40 Theses, Bachelor's Final Projects and Master's Final Projects

> 30 Research staff contracts

> 180 Peer-reviewed indexed articles

> 25 Books and book chapters





RESEARCH AREAS

Technical and methodological expertise



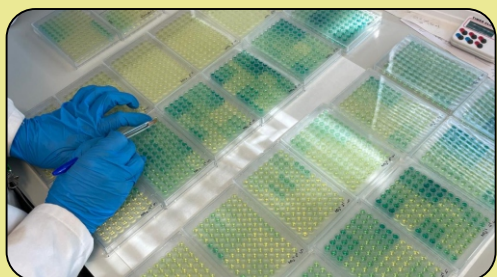
Sustainable crop management

Assessment of the effects of intercropping and the application of organic fertilisers, diagnosis of nutrient requirements, and their impact on productivity.



Carbon cycling in agroecosystems

Studies on carbon balance, CO₂ sequestration, and methodologies for the certification of agricultural carbon credits.



Soil health and biogeochemical processes

Integrated analyses of physicochemical, biogeochemical, and microbiological properties, nutrient dynamics, and assessment of soil multifunctionality under sustainable management practices.



Sustainability and climate change adaptation


Assessment of ecosystem services, and the development and validation of climate-smart practices for European agricultural systems.

COMMUNICATION & DISSEMINATION

Our top priority



> 1 200 000 visitors to
our web resources

click here 



> 20 Science
communication
articles

> 200 Public
outreach
presentations

1 Scientific
presentation
at COP27

At AgroecoliveLab, we believe that scientific results that do not reach the end users for whom they were conceived (especially farmers and consumers) lose a large part of their value. We firmly believe in the social role of our work, aligned with the ecological transition of agriculture and, in particular, of the Mediterranean olive oil sector. Our ability to enhance the visibility and impact of the projects in which we participate, through an intensive and innovative communication strategy, positions us as a strategic partner.

EXPERIENCE IN

- ➔ Social media management and creation of scientific and outreach content.
- ➔ Organisation of outreach and dissemination events.
- ➔ Optimisation of communication strategies.
- ➔ Development of communication campaigns.
- ➔ Application of AI to the design of outreach resources.

PRODUCTION OF

Brochures, leaflets, manuals, guides, glossaries, practical abstracts, posters, interactive calculators, etc.

> 200 Online
news

> 50 Media
interviews

> 30 Training
workshops
with farmers



www.agroecolivelab.com
info@agroecolivelab.com



Campus Las Lagunillas
Universidad de Jaén
Edificio Ciencias Experimentales y de la Salud (B3)
Dependencia: B3-160

Coordination
+34 675 34 41 72
rgarcia@ujaen.es

Communication
+34 674 07 25 99
jlietor@ujaen.es

